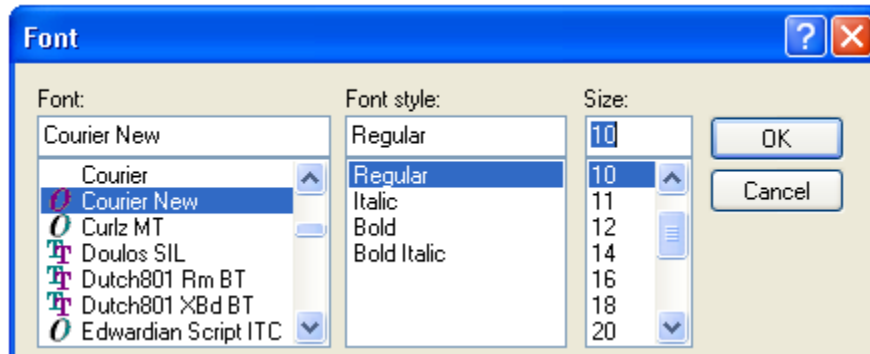


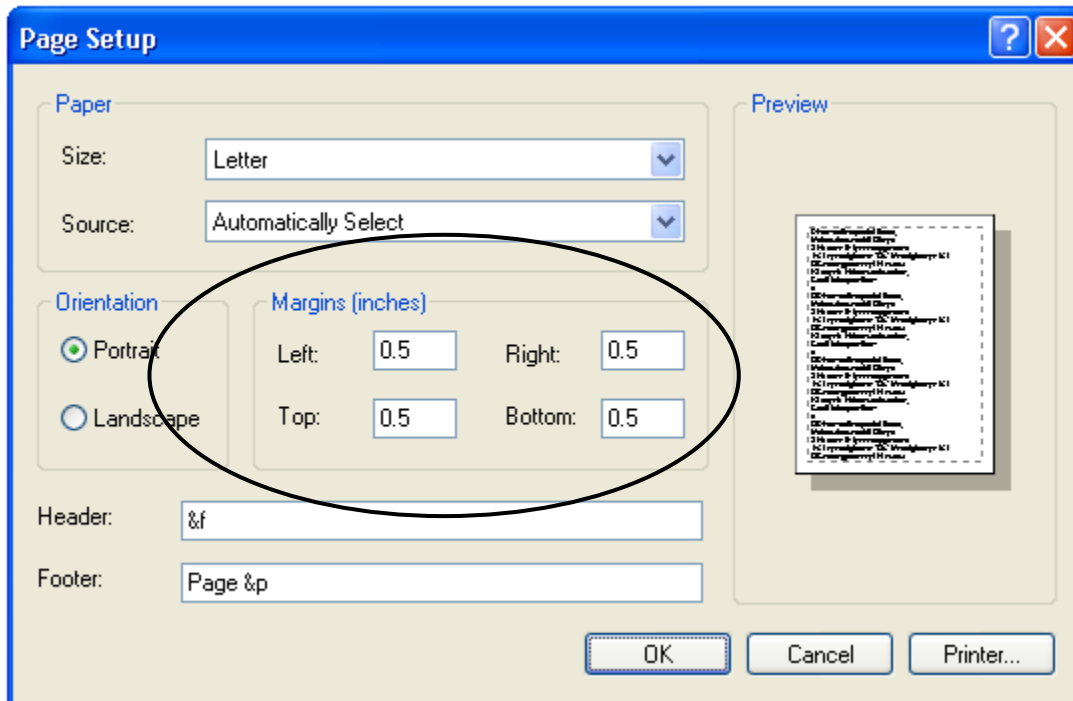
# MR. SHRILLA'S NOTEPAD ASCII ART PROJECT: ASSIGNMENT 1: BACK TO SCHOOL!

## Directions:

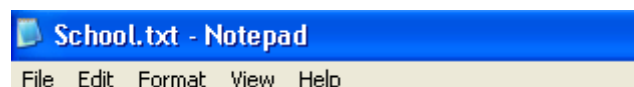
1. Open Windows Notepad (Start→Programs→Accessories→Notepad)
2. Now go to Format→Font and change the font to Courier Regular 10 pt. Courier is font name (what it looks like) and 10 pt. is its size.



3. Click File→Page Setup and change all four margins to 1/2 inch.



4. Now click File→Save. In My Documents type *School*. You should now see *School.txt* at the top of the screen in the menu bar.



(over)

5. Push the Caps Lock key then begin. Here's how to do the first three lines:

LINE 1: Press the space bar 34 times, then press the 'B' key 5 times, then 12 spaces, then 'B' 5 times. Now press [Enter]

LINE 2: Press the space bar 34 times, then press the 'A' key 4 times, then 8 spaces, then 'A' 9 times. Now press [Enter]

LINE 3: Press the space bar 34 times, then press the 'C' key 3 times, then 5 spaces, then 'C' 12 times. Now press [Enter]

**Helpful hint:** When you are done for the day, type the line number you left off on at the beginning of the next line... then you can easily come back to where were.

## LINE

- |                                |                                 |
|--------------------------------|---------------------------------|
| 1 - 34sp/5B/12sp/5B            | 25 - 1sp/23B/2sp/10B/3sp/27B    |
| 2 - 34sp/4A/8sp/9A             | 26 - 2sp/22A/2sp/11A/2sp/26A    |
| 3 - 34sp/3C/5sp/12C            | 27 - 2sp/22C/2sp/10C/3sp/26C    |
| 4 - 34sp/3K/3sp/13K            | 28 - 2sp/22K/14sp/27K           |
| 5 - 33sp/3T/2sp/13T            | 29 - 3sp/21T/2sp/10T/3sp/25T    |
| 6 - 33sp/3-O/1sp/12-O          | 30 - 3sp/21-O/2sp/11-O/2sp/25-O |
| 7 - 32sp/3S/1sp/8S             | 31 - 4sp/20S/2sp/10S/3sp/24S    |
| 8 - 32sp/3C/1sp/2C             | 32 - 4sp/20C/14sp/25C           |
| 9 - 11sp/15H/5sp/3H/5sp/15H    | 33 - 5sp/57H                    |
| 10 - 7sp/23-O/1sp/3-O/1sp/23-O | 34 - 5sp/57-O                   |
| 11 - 5sp/25-O/1sp/3-O/1sp/25-O | 35 - 6sp/31-O/13sp/11-O         |
| 12 - 3sp/60L                   | 36 - 6sp/31L/2sp/9L/3sp/10L     |
| 13 - 2sp/14B/2sp/47B           | 37 - 7sp/30B/2sp/10B/2sp/9B     |
| 14 - 2sp/13A/4sp/46A           | 38 - 7sp/30A/2sp/21A            |
| 15 - 2sp/12C/2sp/2C/2sp/45C    | 39 - 8sp/29C/2sp/20C            |
| 16 - 1sp/12K/2sp/4K/2sp/45K    | 40 - 8sp/29K/2sp/20K            |
| 17 - 1sp/11T/2sp/6T/2sp/44T    | 41 - 9sp/28T/2sp/10T/2sp/7T     |
| 18 - 1sp/10-O/12sp/43-O        | 42 - 9sp/28-O/2sp/9-O/3sp/7-O   |
| 19 - 10S/2sp/10S/2sp/43S       | 43 - 10sp/27S/13sp/7S           |
| 20 - 9C/2sp/12C/2sp/42C        | 44 - 10sp/47C                   |
| 21 - 8H/2sp/14H/2sp/41H        | 45 - 12sp/43H                   |
| 22 - 67-O                      | 46 - 13sp/41-O                  |
| 23 - 1sp/65-O                  | 47 - 15sp/17-O/3sp/17-O         |
| 24 - 1sp/23L/14sp/28L          | 48 - 17sp/12L/9sp/12L           |

When you are completely done, save your work and summon Mr. Shrilla to check it before you print.